

LGMG

H735

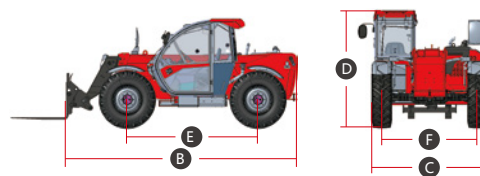
TELEHANDLER



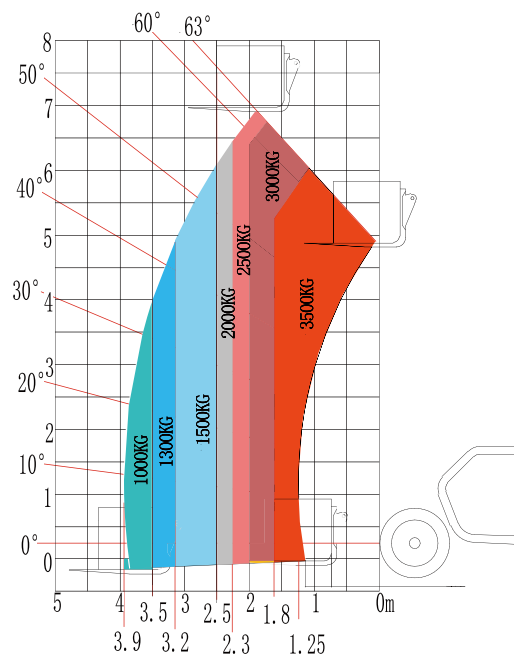
LGMG TELEHANDLER

SPECIFICATIONS

MODELS	H735	
Measurements	Metric	Imperial
A Max. Lifting Height	7m	23'
Max. Outreach	3.9m	12'10"
B Overall Length	5m	16'5"
C Overall Width	2.33m	7'8"
D Overall Height	2.34m	7'8"
E Wheelbase	2.85m	9'4"
F Wheel Track	1.93m	6'4"
Ground Clearance	0.45m	1'6"
PRODUCTIVITY		
Max. Capacity	3500kg	7716 lbs
Gradeability-Unladen	45%	
Min. Turning Radius	3.9m	12'10"
Tilt Angle	±5°	
Drive /Steering Mode	4 Wheel Drive / 4 Wheel Steer	
Primary Boom Ascending Time	5-15s	
Primary Boom DescendingTime	5-15s	
Boom Extending Time	5-15s	
Boom Retracting Time	5-15s	
Forward - First Gear Travel Speed	9km/h	5.6mph
Forward - Second Gear Travel Speed	27km/h	16.8mph
Backward - First Gear Travel Speed	9km/h	5.6mph
Backward - Second Gear Travel Speed	27km/h	16.8mph
Braking	Multiple-disk brake with oil bath on front and rear axles	
Max. Braking Distance-Unladen	≤ 3m (27km/h)	≤ 9'11"(16.8mph)
Standard Tyres	400/80 R24	
POWER		
Manufacturer	Kubota V3307	
Rated Power	54.6kW	73.2hp
Max. Torque	261.1N.m	192.6 lb.ft
Displacement	3331ml	203.3 cu.in
TANK CAPACITIES		
Hydraulic Oil Capacity	100L	26.4gal
Fuel Tank Capacity	100L	26.4gal
WEIGHT		
Machine Weight	7000kg	15432 lbs



Rough terrain load chart
Standard EN1459 B



Please contact LGMG or a local dealer for more details.

LGMG reserves the right to change technical data without prior notice. All photos and pictures in this brochure are for promotional purposes only.

LINGONG HEAVY MACHINERY CO., LTD.

Address: No. 2676, Kejia Road, Jinan, Shandong, China

Email: sales@lgmg.com.cn Tel: +86 531 6787 9283

www.lgmglifts.com



RELIABILITY IN ACTION